

Custom cable bus solutions

Safely and efficiently manage high-capacity electrical loads

Eaton's Cable Bus is a customizable, enclosed power distribution system designed to safely and efficiently manage high-capacity electrical loads from 600-35,000V and 800-6,000A. It offers an ideal hybrid solution between cable tray and busway, delivering superior cable support and isolation for high-power transmission and a highly customizable design.

Eaton Cable Bus features an enclosed design which protects cables from environmental hazards in both interior and exterior uses, making it ideal for applications such as data centers, utility plants, co-generation facilities, and light industrial environments, providing a continuous and reliable flow of power to ensure operational stability.

Choosing Eaton's Cable Bus system provides the convenience of sourcing all components through a single, trusted supplier and the confidence of knowing that your project is backed by Eaton's industry expertise and support.

Features and benefits

- Ideal for high-capacity electrical loads.
- Superior protections from environmental hazards. Suitable for interior and exterior use in a variety of environments.
- Highly customizable. Ideal for complex layouts and specific project requirements.
- Modular design allows for easy installation and on-site modifications. Standard maintenance required.
- High safety standards with fully insulated conductors, compliant with industry regulations.
- Cost-effective solution for high-power applications, reducing installation and maintenance costs.

Certifications

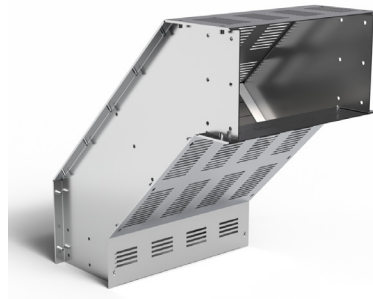
- Certified as per CSA C22.2 No. 273:19



Straight runs



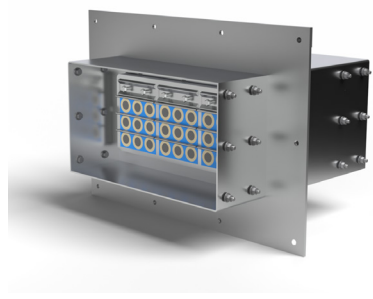
Horizontal bends



Vertical bends



Tap box or termination box



Wall penetration kits



Tray-to-box connector



Cable Bus System advantages

Reliable power distribution

Ensures a continuous and reliable flow of power, providing operational stability for high-capacity electrical loads. This reliability is crucial for industries where power interruptions can lead to significant downtime and financial losses. By maintaining a stable power supply, Eaton's Cable Bus system helps to ensure that operations run smoothly and efficiently.

Single-supplier convenience

Eaton provides a comprehensive range of Cable Bus components and complementary parts including cable glands, strut supports, switchgear, transformers, enclosures, and cable tray for lower power wire. Ordering from a single, trusted supplier helps to simplify the procurement process, reduce lead times, and ensure full-system compatibility. Additionally, Eaton's extensive distribution network helps you get the parts you need, when you need them.

Expert planning and assistance

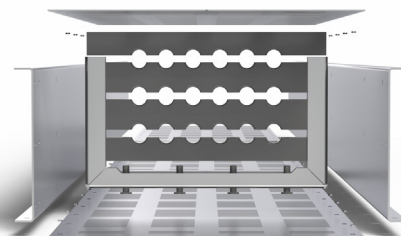
Our team of experts works closely with you to develop a tailored solution that meets your specific project layouts and requirements. Various configuration options are available, allowing you to choose the best setup for your needs. Backed by Eaton's industry expertise and support, this system offers a seamless experience, ensuring easy installation and long-term reliability for even the most demanding power applications.

Cost-effective solutions

Reduce installation and maintenance costs compared to traditional power distribution methods. Modular design allows for easy installation, minimizing labor costs and reducing the time required to set up the system. Robust construction and high-quality materials ensure long-term durability, reducing the need for frequent maintenance and replacements.

Safety and compliance

Safety is a top priority in power distribution, and Eaton's Cable Bus system is designed to meet high safety standards. The system features fully insulated conductors, which help to prevent electrical faults and reduce the risk of accidents. Additionally, the Cable Bus system complies with industry regulations and standards, ensuring that it meets the necessary safety and performance criteria.



Let's talk about your next project!



Scan the QR code to access an inquiry form where you can share your project details or request more information.

You can also contact us at BLineTechnicalSupport@Eaton.com or use the sales agent locator on MyEaton to get connected.

Cable Bus systems are highly configurable and are engineered-to-order for each specific power distribution system.

The catalog part numbering chart below provides a reference to our most popular options. Contact us at BLineTechnicalSupport@Eaton.com for specific project requirements.

Cable Bus Straight Section Part Numbering

Prefix

Example: **CB S A - N - 06 1600 - 144**

Cable Bus	Material	Conductors	Neutral	Voltage	Amperage	Length
CB = Cable bus	S = Sheet metal E = Extrusion	A = Aluminum C = Copper	N = No neutral (3P 3W) W = With neutral (3P 4W)	06 = 600V 50 = 5kV 15 = 15kV 35 = 35kV	800 = 800A 1200 = 1200A 1600 = 1600A 2000 = 2000A 2500 = 2500A 3000 = 3000A 3500 = 3500A 4000 = 4000A 5000 = 5000A 6000 = 6000A	144 = Length in inches (Other lengths to be set up as custom parts by ETO team. e.g. 36, 60, 72, 84, etc.)

Cable Bus Fittings Part Numbering

Prefix

Example: **CB S A - W - 06 1200 - 90HB**

Cable Bus	Material	Conductors	Neutral	Voltage	Amperage	Angle	Fitting Type
CB = Cable bus	S = Sheet metal E = Extrusion	A = Aluminum C = Copper	N = No neutral (3P 3W) W = With neutral (3P 4W)	06 = 600V 50 = 5kV 15 = 15kV 35 = 35kV	800 = 800A 1200 = 1200A 1600 = 1600A 2000 = 2000A 2500 = 2500A 3000 = 3000A 3500 = 3500A 4000 = 4000A 5000 = 5000A 6000 = 6000A	30 45 60 90	HB VI VO

Voltage (V)	Ampere (A)									
600, 5000, 15000, 35000	800	1200	1600	2000	2500	3500	4000	5000	6000	